



**Newsletter  
May 2021  
ANARE Club  
NSW Branch**



**MWL theme: 70 years of the ANARE Club**

## Out of COVID-19 lockdown!

We are very pleased to announce that after a long year of COVID-19 lockdowns, restrictions and Zooming we are able to organise a face-to-face MWL in 2021.

The event will be held in accordance with the venue's COVID-Safe Plan which may mean some aspects of the event will look a little different this year. It will depend on where NSW Health restrictions are at in June. We are working with the venue to ensure we can run a COVID-Safe event. The 4 x pillars of COVID-Safe events will be in place as a minimum:

1. Do not come to the event if: you are unwell; you have been advised by a physician to take a COVID-19 test; you are awaiting COVID-19 test results; you have been advised by NSW Health to self-isolate; or have been to a NSW Health COVID-19 case location resulting in you having been identified a 'close' or 'casual' contact.
2. All attendees should practice good hand hygiene and respiratory etiquette.
3. Maintain 1.5m physical distancing, and where unable to distance, mask wearing is recommended.
4. Check-in upon entry to the venue.

Many of you will likely have been lucky enough to have received your first vaccination dose by June. Please be mindful that there will be others at the event who will not have been so lucky and may wish to take extra precautions. Please do not be offended if someone is distancing themselves or wearing a mask. All COVID-Safe behaviours are encouraged so everyone can feel safe and enjoy the event. Your NSW Committee will supply hand sanitiser and wipes and we encourage you to use these liberally during the event.

## Midwinter Lunch

Join us on **Saturday 26<sup>th</sup> June** to share the ANARE spirit.

**NOTE:** As in recent years we are having a lunch event.

**Epping Tracks (affiliated with Epping Hotel)**

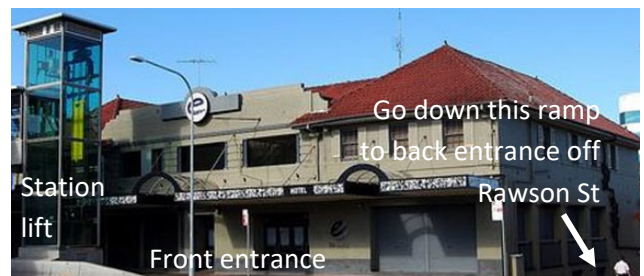
West side of Epping Station, Beecroft Road

**Time:** 1130 hrs arrival & registration, 1200 hrs for homers, proceedings finish 1600 hrs, venue available to 1700 hrs to

allow more time for catching up with friends. The Hotel Lounge is open from midday.

**Dress:** Smart-Casual.

**Theme:** 70 Years of the ANARE Club. If you have digital pictures reflecting the history of the Club and would like to contribute them to the rolling slide show for the event, please email files to [rowanbutler@yaksnap.net](mailto:rowanbutler@yaksnap.net)



**Cost:** We are heavily subsidising the event this year from NSW Branch finances. We trust this will attract people to come out in-person to the event. \$55 members/guests, \$75 non-members/guests. This is a flat rate. There is no Early-Bird special this year.

**Cost includes:** One ticketed pre-dinner drink (Homers) and nibbles, a two course meal, wine and juice on tables. Other pre-event and extra drinks can be purchased at the bar.

**Response form and payment:** We must receive this by **12<sup>th</sup> June** for catering purposes. As a bonus incentive, if you register by **1<sup>st</sup> June** you will receive a free mug celebrating 70 Years of the ANARE club (it's becoming a NSW tradition!).

Please indicate your Station details for your name tag and fill in the box at the bottom of the form to update your contact details, **especially email addresses**. Please notify us of any departed expeditioners for special recognition during the evening. Note that this year there won't be assigned tables.

**Payment options:**

**We prefer Direct deposit payments.**

Option 1 - Direct deposit and email response form

BSB: 633000 Account number: 122045578 Account name: ANARE Club NSW

**Contact Information for the ANARE Club - NSW Branch**

**Postal Address:** Lucinda Coates, ANARE Club – NSW Branch, 8/ 6-8 Donald Ave, Epping NSW 2121. **Web:** [www.anareclub.org.au](http://www.anareclub.org.au) **Email:** [lucinda.coates@riskfrontiers.com](mailto:lucinda.coates@riskfrontiers.com) **Phone:** 0452 488 256

**Important** - please include your membership number or surname in the *reference field* so we know who has paid. Then, email your electronic response form to: [lucinda.coates@riskfrontiers.com](mailto:lucinda.coates@riskfrontiers.com)

**Option 2 – Cheque or money order & post response form**

Send cheque and response form to: Lucinda Coates, ANARE Club – NSW Branch, 8/ 6-8 Donald Ave, Epping, NSW 2121.

**Access:** By train, the access is simple. The entrance to the Hotel is at street level right at the station concourse lift (see picture above). To avoid internal stairs, please make your way down the external ramp/pathway to the right of the front entrance and enter Epping Tracks at the back door (behind the drive-thru bottle shop if you are coming off Rawson St). Street parking and Coles carpark are available on Rawson Street. Wheelchair access to the venue is available.

Your committee would love to see you: we don't want transport to be the reason why you don't come. So, if you would like help with transport, or could provide it, please contact Warwick Williams ([warwickwilliams@gmail.com](mailto:warwickwilliams@gmail.com)).

**Photography:** In the spirit of economy we are asking guests to use their own cameras/phones and they will go on the website when we have a web-master. A formal group photo will still be taken.

**Annual General Meeting:** All offices will be declared vacant and a new committee elected. The committee organises our NSW events, such as MWD and the Slide Night.

**2021-2022 Committee:** Please consider putting yourself forward to serve. **We particularly need to fill the position of webmaster and refresh the Committee.** We would like to see expressions of interest for these positions before MWL. See email our NSW President, David Ellyard, with your nomination to [david@davidellyard.com](mailto:david@davidellyard.com)

**Sales:** If you do not pay early we may (TBC) have a small number of additional mugs for sale on the day. Cost: **\$20 each (cash only)**. Please bring the correct change. There will be no raffle: however, if you have item(s) that you would like to donate to a silent auction to support the NSW Branch, please email our NSW President, David Ellyard, with details of your kind donation before MWL, and please remember to bring it on the day!

**Reunions:** If you are planning a reunion this year, please let your Committee know ASAP so we can help with your arrangements. Contact David Ellyard (Ph: 0402243300).

**Guest Speaker: NSW members by the decade**



Given the theme of this year's lunch is 70 Years of the ANARE Club we thought it would be an important moment to hear from our own members, one from each decade from the 1950s to 2020s.

From the MWL registration list we will invite one person per decade to make a 5 min presentation about their assigned decade. This will be a relatively rapid fire session with a cow bell for speakers who exceed the 5 min limit! We have 7 decades to cover. If you wish, two visuals are allowed per speaker/decade (either digital photos or mementos etc.) to be submitted before the event. If you would like to nominate yourself to speak about your decade please email David Ellyard [david@davidellyard.com](mailto:david@davidellyard.com) and we will consider you for one of our speaker spots.

More generally, we invite members to bring memorabilia for display illustrating the ANARE spirit over 70 Years ("All care, no responsibility").

**Slide Night- 2021 and 2022**

For a variety of reasons we will not be holding a Slide Night this year. If we hold a 2022 Slide night it will be advertised at a later date. If you would like to host this event, please let us know.

**Antarctic Voices**

The NSW Branch is ramping up our support for the ANARE Club's vital Antarctic **oral history project**, recording the memories of expeditioners of their time "Down South", especially interviewing the older brigade while they are still with us. But we all have stories to tell. This is a fantastic way of recording Antarctic (and Club) history for posterity.

The NSW Branch has its own recording equipment for use in interviews. If you want to be involved as an interviewer (we will meet any expenses), to be interviewed yourself or to suggest someone we should not miss, please email David Ellyard [david@davidellyard.com](mailto:david@davidellyard.com). All that is required from you is your time to do the interview and check the transcription for accuracy!

**Email Newsletters and Notices**

We would like to have better contact with members and email is a quick and effective way to do this. To receive email newsletters, please update your email and contact details by either adding them to the MWL response form or contacting Margaret Whitelaw via email ([margaretwhitelaw09@gmail.com](mailto:margaretwhitelaw09@gmail.com)). All newsletters are sent electronically to email addresses. For those without a computer we will continue with hard copies sent in the mail. Please send the response form with your contact details should this be the case, even if you are not attending MWL 2021.

**Club membership**

To encourage an increase in Club Membership, the NSW Branch currently allows non-members to attend MWD on the understanding that they, and their guests, pay a surcharge per head. If your membership has lapsed or you would like to become a member, you can pay membership online via [www.anareclub.org.au](http://www.anareclub.org.au) or download a membership form and post to: The Secretary, ANARE Club, GPO Box 2534 Melbourne 3001 Email: [secretary@anareclub.org.au](mailto:secretary@anareclub.org.au) (in line with the current ANARE Club National Policy, the NSW Branch is unable to accept membership dues with dinner payment).

**Contact Information for the ANARE Club - NSW Branch**

**Postal Address:** Lucinda Coates, ANARE Club – NSW Branch, 8/ 6-8 Donald Ave, Epping NSW 2121. **Web:** [www.anareclub.org.au](http://www.anareclub.org.au) **Email:** [lucinda.coates@riskfrontiers.com](mailto:lucinda.coates@riskfrontiers.com) **Phone:** 0452 488 256